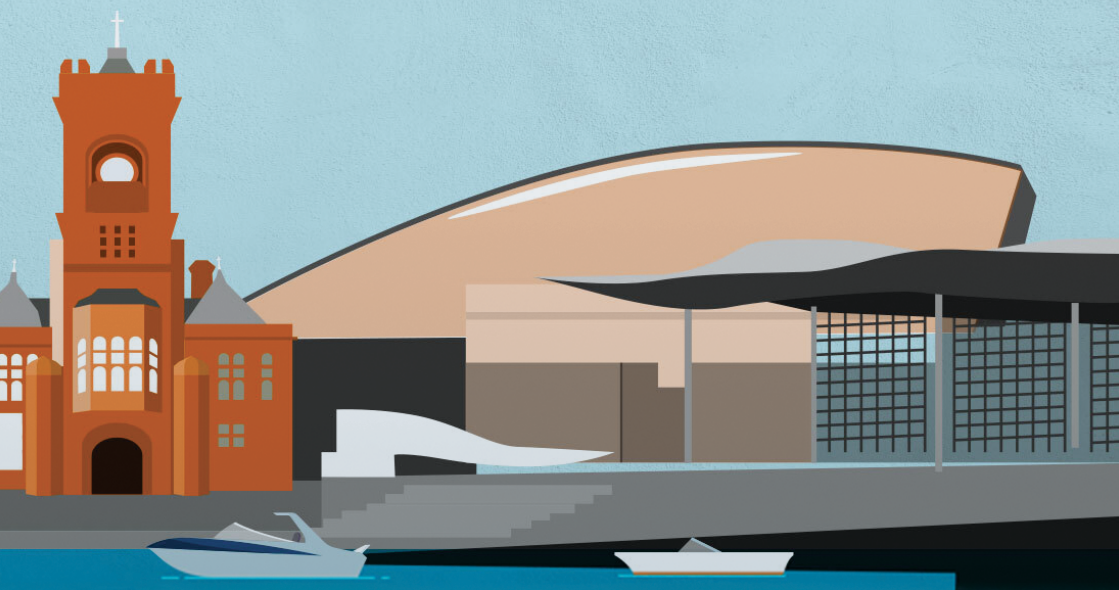


Your guide to voting in the Senedd election

Thursday 7 May 2026

This booklet has
been produced by the
Electoral Commission



The
Electoral
Commission

YOUR VOTE MATTERS

DON'T LOSE IT





On Thursday 7 May 2026, there will be a Senedd election in Wales

The Senedd has powers to make laws for Wales on a range of areas including:



health



the economy



education



housing



transport



Welsh language



some taxes

The laws and decisions the Senedd will make will affect you and your community.

This booklet explains what you need to know before the election and tells you where you can find more information.

Who can vote?

You can vote in the Senedd election if you are registered to vote in Wales, will be **16 years old or over** on Thursday 7 May 2026 and are:

- a UK or Irish citizen or
- a qualifying Commonwealth citizen who has permission to remain in the UK or does not require such permission or
- a qualifying foreign citizen who has permission to enter or stay in the UK or who does not need such permission, including EU citizens

British citizens living overseas **can't vote** in this election.

For more information about eligibility and who can vote go to **electoralcommission.org.uk/who-can-vote**



How do I register to vote?

You must be registered to vote by midnight on Monday 20 April 2026 to vote in this election.

It's important that you register to vote as early as possible in case your local council needs to check any details with you.

If you've never registered or have recently moved house or changed your name, you can register to vote online at **gov.uk/register-to-vote** or by contacting your local council.

You can find your local council's contact details by typing in your postcode at **electoralcommission.org.uk/voter** or calling **0800 3 280 280**



How do I vote?

1

At your polling station

on Thursday 7 May 2026



Polling stations are open from 7am to 10pm.

You will be sent a poll card telling you where your polling station is. You don't need your poll card to vote and if you lose it or don't receive it, you can find your polling station by typing in your postcode at **electoralcommission.org.uk/voter** or contacting your local council.

You **do not** need to show photo ID to vote in the Senedd election.



How do I vote?

2



By proxy (allowing somebody you trust to vote on your behalf)

To apply to vote by proxy, complete an application form and send it to the electoral services team at your local council.

**It must arrive by 5pm
on Tuesday 28 April 2026.**

In an emergency



If you have an emergency that means you can't get to the polling station in person, you can apply for an emergency proxy (allowing somebody you trust to vote on your behalf).

You will need to apply before 5pm on polling day, Thursday 7 May 2026.

How do I vote?

3

By post



To apply to vote by post, you need to complete a postal vote application form and send it to the electoral services team at your local council.

**It must arrive by 5pm
on Tuesday 21 April 2026.**

If you already have a postal vote, make sure it is for the **Senedd election**. Your postal vote may be for the UK Parliament general election only.

Contact your local council to check if you need to apply for a Senedd postal vote.

How do I vote?

3



By post (continued)

You will receive your ballot paper and postal voting statement by post. Complete and return your postal vote pack, ensuring you leave enough time for it **to arrive by 10pm on Thursday 7 May 2026**. You can also hand in your postal vote pack at your polling station on polling day by 10pm.

For more information or to find a postal or proxy application form, go to **electoralcommission.org.uk/voter** or call our helpline on **0800 3 280 280**



What does the Senedd do?

At this election, you will be voting for who you want to represent you in the Welsh Parliament, commonly known as the Senedd.

The Senedd has powers to make laws for Wales on a range of areas including health, the economy, education, housing, transport, the Welsh language and some taxes.

For more information about the Senedd go to **[senedd.wales/election](https://www.senedd.wales/election)**



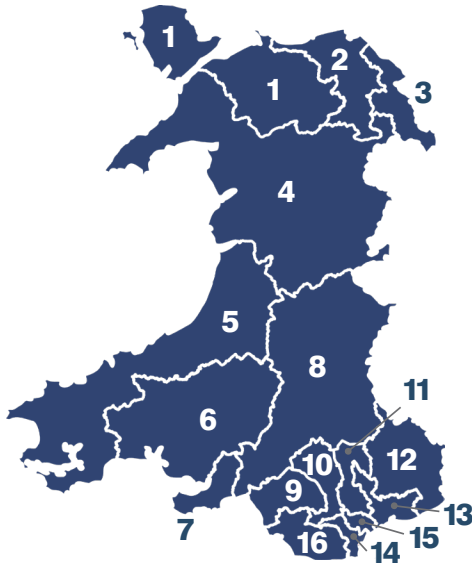
The Senedd is changing

Wales has been divided into 16 new constituencies for this election. Each constituency will have six Members, making a total of 96 Members elected to the Senedd instead of the 60 it has now.

To find your new constituency, go to **constituency.senedd.wales**



The Senedd is changing



1. Bangor Conwy Môn
2. Clwyd
3. Fflint Wrecsam
4. Gwynedd Maldwyn
5. Ceredigion Penfro
6. Sir Gaerfyrddin
7. Gŵyr Abertawe
8. Brycheiniog Tawe Nedd
9. Afan Ogwr Rhondda
10. Pontypridd Cynon Merthyr
11. Blaenau Gwent Caerffili Rhymni
12. Sir Fynwy Torfaen
13. Casnewydd Islwyn
14. Caerdydd Penarth
15. Caerdydd Ffynnon Taf
16. Pen-y-bont Bro Morgannwg

How do I fill in the ballot paper?

You must be registered in order to vote.

You will receive one ballot paper.

You will have one vote to choose your representative.



Please make sure you read the instructions on your ballot paper.

The ballot paper will show the list of candidates for each political party in your constituency and any independent candidates.

How do I fill in the ballot paper? (continued)

To vote, put a cross (X) in the box next to your choice of political party or independent candidate.


Remember, you vote for one political party or one independent candidate, not individual candidates on a party's list.

Only put one cross (X) on the ballot paper. If you put a cross (X) next to more than one box, your vote will be considered a 'spoilt ballot' and will not be counted.


How do I fill in the ballot paper? (continued)

Etholiad Senedd Cymru Papur pleidleisio ar gyfer Aelodau Senedd Cymru ar gyfer etholaeth	Senedd Cymru election Ballot paper to elect the Senedd Cymru Members for theconstituency
Pleidleiswch unwaith yn unig drwy roi croes [X] yn y bocs pleidleisio gyferbyn â'ch dewis	Vote only once by putting a cross [X] in the voting box next to your choice


Bloggs Party

1. Jane Doe 2. Dusty Boots 3. Earl Grey 4. Robin Hood	5. Mary Contrary 6. Blossom Tree 7. Roger James 8. August Caesar		<input type="checkbox"/>
--	---	---	--------------------------


Nightingale Party

1. Charles Bucket 2. Kris Kringle 3. Hamish Scot 4. Pepper Pot	5. Susannah Salt 6. Basil Bush 7. Sunny Day 8. Rain Storm		<input type="checkbox"/>
---	--	---	--------------------------

Pelican Party

1. Michael Angelos 2. Suki Moon 3. May Day 4. River Deep	5. Apple Orchard 6. Victoria Line 7. Roman Ruin 8. Sandy Shore		<input type="checkbox"/>
---	---	---	--------------------------

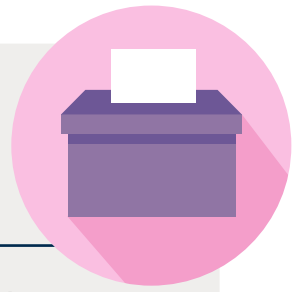
Plaid y Genhinen

1. Leif Fall 2. William Shakes 3. Grace Period 4. Coral Reef	5. Vincent Flowers 6. Jemima Duck 7. November Rain 8. Wendy Miller		<input type="checkbox"/>
---	---	---	--------------------------

Baker, Cupcake
Annibynnol / Independent

Example ballot paper

How does the voting system work?



The way you vote in Senedd elections has changed. You will now vote using a voting system called the 'closed proportional list system' to elect Members of the Senedd.

This is a form of proportional representation. This means the number of seats each party or independent candidate wins reflects the percentage of votes they receive.

The ballot paper will show a list of candidates for each political party and any independent candidates.

The parties choose the order that candidates appear on their list. The lists are 'closed' – this means that voters cannot change the order of those candidates. The people at the top of the list are elected first.

How will candidates be elected?



The system used to allocate seats in the Senedd is the same system that was used to allocate regional seats at previous Senedd and Welsh Assembly elections.

The more votes a political party or independent candidate gets, the more seats they will win.

For example, if a political party wins three seats, the top three people on their list will be elected to those seats. 96 Members of the Senedd will be elected in total.

The count is carried out in front of observers, including representatives from all political parties and candidates to ensure its integrity, so everyone is satisfied that the final result reflects the actual votes cast.

How will candidates be elected? (continued)



For a more detailed description
of how votes are allocated,
go to **[electoralcommission.
org.uk/senedd-voting](https://www.electoralcommission.org.uk/senedd-voting)**



How can I find out more?

If you would like a copy of this booklet in another format, go to **electoralcommission.org.uk/booklet**

Scan the QR code to access this information in other formats



For more information about the election visit **vote.wales**

If you have any questions, call our helpline on **0800 3 280 280**

To contact us using BSL, go to **electoralcommission.org.uk/BSL** for details

How can I find out more?



 **@ElectoralCommissionUK**

 **/ElectoralCommissionUK**

 **@ElectoralWales**

This booklet has been produced by the Electoral Commission.

The Electoral Commission is the independent body which oversees elections and regulates political finance in the UK. We work to promote public confidence in the democratic process and ensure its integrity.

The
Electoral
Commission